
K-STATE
Research and Extension

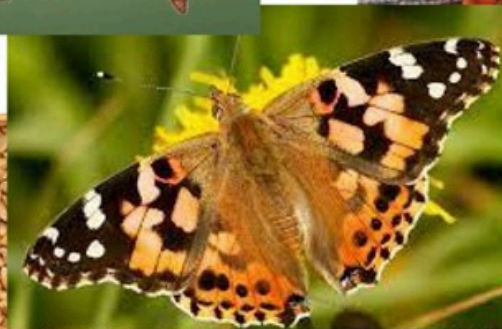


Shawnee
County

4-H SCHOOL ENRICHMENT PROGRAM

Shawnee County K-State
Research & Extension

Fall 2024 - Spring 2025 School Year





DEAR EDUCATORS

K-State Research and Extension has a long-standing tradition of providing school enrichment programs to classrooms across Kansas. We at the Shawnee County Office are ecstatic to offer these opportunities to our local classrooms. Our Programs fall into a wide range of areas; including but not limited to: Biological Sciences, Environmental Sciences, Food & Nutrition, and Plant Sciences.

We are focused on providing youth with an opportunity to explore, discover, and master through positive hands-on activities and interactive discussions with classmates and caring adults. Shawnee County Extension has six agents in the areas of Agriculture, Horticulture, Family and Consumer Sciences, Community Vitality, 4-H Youth Development, and Foods and Nutrition Education. We also have several Program Assistants/Educators in the above areas.

Please contact us to reserve programs for your classroom.

Don't see a topic your students would be interested in? Reach out! This booklet contains only a sample of what Shawnee County Extension has to offer.

Kansas State University Agricultural Experiment Station and Cooperative Extension Service.

K-State Research and Extension is an equal opportunity provider and employer.

Kansas State University is committed to making its services, activities, and programs accessible to all participants. If you have special requirements due to a physical, vision, or hearing disability, or a dietary restriction please contact Grace Wiens (785) 232-0062, ext. 120.

If you have been taking part in our School Enrichment Programs for several years, you may notice a change in this year's prices.

It is time to replace many aging items as well as update books and other educational materials. As we are aware, costs have increased across the board.

It is a goal here in the 4-H office to reach out to investigate some sponsorship of programs and/or schools.

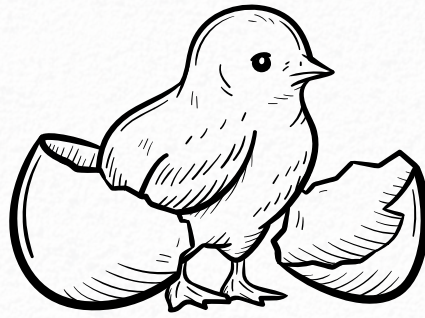
If your school or district works closely with any business you think might be interested in helping, please let us know. We are happy to make new connections to help better the community.

Kansas State University Agricultural Experiment Station and Cooperative Extension Service.

K-State Research and Extension is an equal opportunity provider and employer.

Kansas State University is committed to making its services, activities, and programs accessible to all participants. If you have special requirements due to a physical, vision, or hearing disability, or a dietary restriction please contact Grace Wiens (785) 232-0062, ext. 120.

CHICKEN EMBRYOLOGY



\$17.00 for 12 eggs & an incubator

\$7.00 for 12 eggs only

Targeted Grade Levels: 2nd- 3rd

Availability: One Session in October, February, and March.

(See Program Calendar for more details.)

Observation Length: 4 weeks

Standards: NGSS 3-LS1-1; 3-LS3-1

Extension Office Provides: One dozen hatching eggs, online resources, detailed Instructions, incubator (if needed), and other educational materials (as requested).

Teacher Provides: Daily observation, brooder, feeder, and waterer once chicks have hatched.

Over four weeks, students will learn about embryology development through observing the 21-day incubation period while getting a chance to hatch their chicks. Youth will also learn about proper handwashing while handling chicks and the responsibility of raising chickens.

ANTS

Price: \$10.75

Target Grade Levels: 1st-4th

Availability: One session in October, and April.
(See Program Calendar for more details.)

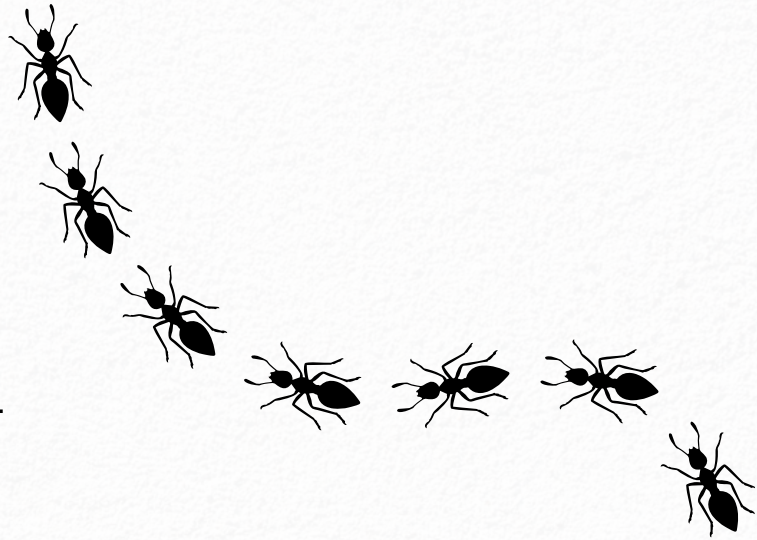
Observation Length: 3-4 Weeks

Standards: NGSS 2-LS4; 3-LS2;4-LS1-1

Extension Office Provides: Ant farm, live ants, ant food, and water dropper. Online resources, and other educational materials as requested.

Teacher Provides: Daily observation, feeding, and watering.

Over four weeks students will get to watch the ants build the colony while learning about any anatomy, life-cycle, and the role of ants in the environment.



Price: \$4.00 per kit
(each kit serves three
students)

Target Grade Level: 4th

Availability: Two separate
sessions in January



WHEAT SCIENCE

Standards: KCCRS Social Studies; Economics & MW Region content Math; 4.MD.2

Extension Office Provides: One bread kit per 3 students, bread Instructions, online resources, and other educational materials as requested.

Teacher Provides: Water, oil, measuring utensils, and an oven to bake the bread.

This is the perfect program for Kansas Day! Over two weeks, students will explore the importance of Kansas wheat, the principles of baking, yeast development, and good nutrition.

BUTTERFLIES

Price: \$8.50 for three larvae

Target Grade Levels: 1st and 2nd

Availability: One session in April

Standards: NGSS 1-LS1-1-2; 3-LS1-1

Extension Office Provides: 3 Painted Lady larvae, with food. Online resources, butterfly habitat (if needed), and other educational materials as requested.

Teacher Provides: Daily observation, sugar water (once butterflies have emerged).

For four weeks students will gain firsthand knowledge of insects and the process of development from larvae to adults. They will also gain an understanding of what insects are and how they fit into our world.



FROM FARM TO YOU

From Farm to You is a one-day event designed to show second-grade students that agriculture impacts everyone, from the food we eat to the clothes we wear, and more! Every class gets to visit 10 learning stations taught by experts in the field of agriculture.

Date: April 16, 2025

Location: Stormont Vail Events Center

If you are interested in getting your classroom signed up, please reach out to our Director, Candis Stiles, candism@ksu.edu

This event can fill up quickly!

2024-2025 PROGRAM CALENDAR

September 2024						
Sunday	Monday	Tuesday	Wednesday	Thursday	Friday	Saturday
1	2	3	4	5	6	7
8	9	10	11	12	13	14
15	16	17	18	19	20	21
22	23	24	25	26	27	28
29	30					

October 2024						
Sunday	Monday	Tuesday	Wednesday	Thursday	Friday	Saturday
		1	2	3	4	5
6	7	8	9	10	11	12
13	14	15	16	17	18	19
20	21	22	23	24	25	26
27	28	29	30	31		

November 2024						
Sunday	Monday	Tuesday	Wednesday	Thursday	Friday	Saturday
					1	2
3	4	5	6	7	8	9
10	11	12	13	14	15	16
17	18	19	20	21	22	23
24	25	26	27	28	29	30

December 2024						
Sunday	Monday	Tuesday	Wednesday	Thursday	Friday	Saturday
1	2	3	4	5	6	7
8	9	10	11	12	13	14
15	16	17	18	19	20	21
22	23	24	25	26	27	28
29	30	31				

Deadlines

September 23: fall ant order due.

September 24: fall chick embryo order due.

October 14: fall ant delivery.

October 15: fall chick embryo delivery.

November 4: fall ant pickup.

November 5: fall chick embryo pickup.

December 6: wheat science order due.

2024-2025 PROGRAM CALENDAR

January 2025						
Sunday	Monday	Tuesday	Wednesday	Thursday	Friday	Saturday
			1	2	3	4
5	6	7	8	9	10	11
12	13	14	15	16	17	18
19	20	21	22	23	24	25
26	27	28	29	30	31	

February 2025						
Sunday	Monday	Tuesday	Wednesday	Thursday	Friday	Saturday
						1
2	3	4	5	6	7	8
9	10	11	12	13	14	15
16	17	18	19	20	21	22
23	24	25	26	27	28	

March 2025						
Sunday	Monday	Tuesday	Wednesday	Thursday	Friday	Saturday
						1
2	3	4	5	6	7	8
9	10	11	12	13	14	15
16	17	18	19	20	21	22
23	24	25	26	27	28	29
30	31					

April 2025						
Sunday	Monday	Tuesday	Wednesday	Thursday	Friday	Saturday
		1	2	3	4	5
6	7	8	9	10	11	12
13	14	15	16	17	18	19
20	21	22	23	24	25	26
27	28	29	30			

May 2025						
Sunday	Monday	Tuesday	Wednesday	Thursday	Friday	Saturday
				1	2	3
4	5	6	7	8	9	10
11	12	13	14	15	16	17
18	19	20	21	22	23	24
25	26	27	28	29	30	31

Deadlines

January 3: early wheat science delivery (tentative).

January 14: winter chick embryo order due.

January 21: late wheat science delivery (tentative).

January 28: winter chick embryo delivery.

February 25: winter chick embryo pickup.

March 4: spring chick embryo order due.

March 11: spring ant & butterfly order due.

March 25: spring chick embryo delivery.

April 1 & 2: spring ant & butterfly delivery.

April 22: spring chick embryo pickup.

May 5 & 6: ant & butterfly pickup.

May 13: last day to return all program materials.



CONTACT US FOR MORE INFORMATION

Shawnee County K-State
Research and Extension Office
1740 SW Western Ave.
Topeka, KS 66604
785.232.0062
www.shawnee.ksu.edu

Jill Foster
4-H Program Assistant
jillfo@ksu.edu

Scan QR
Code to
sign-up!



K-STATE
Research and Extension



Shawnee
County